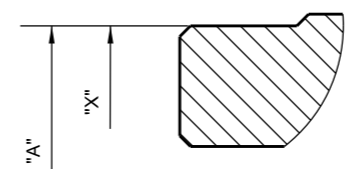
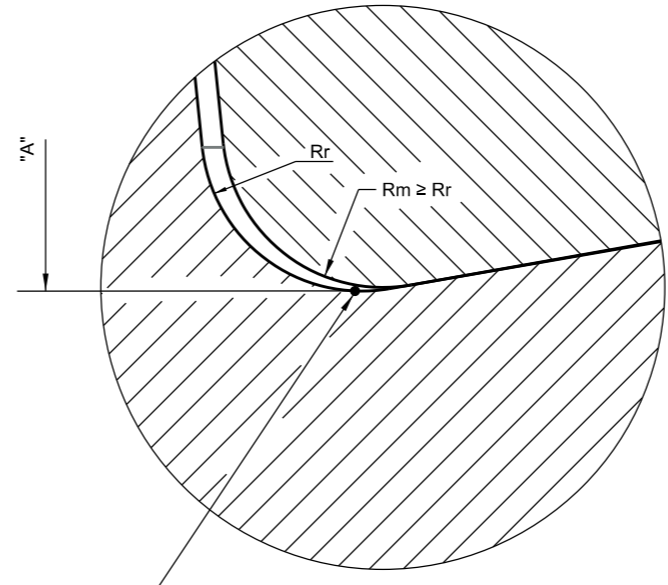


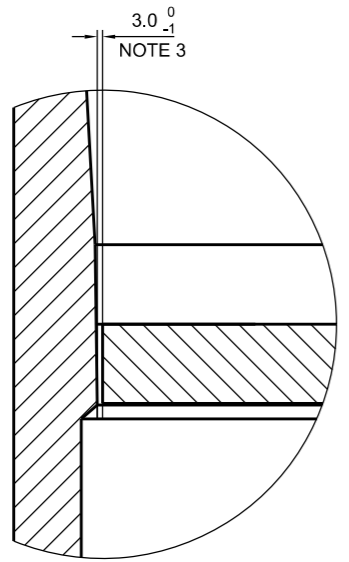
SECTION A-A



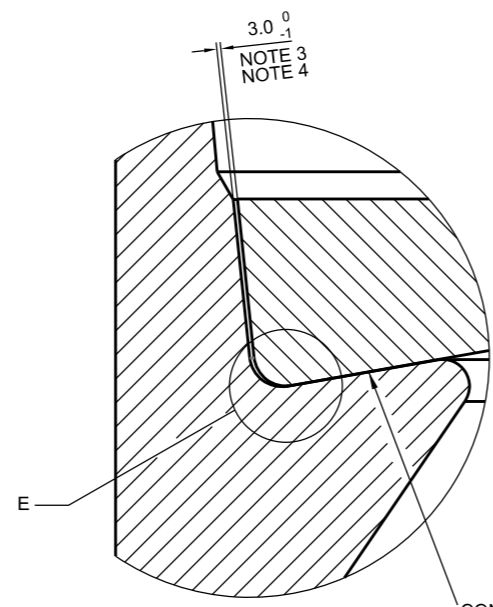
DETAIL B
SCALE 1:5



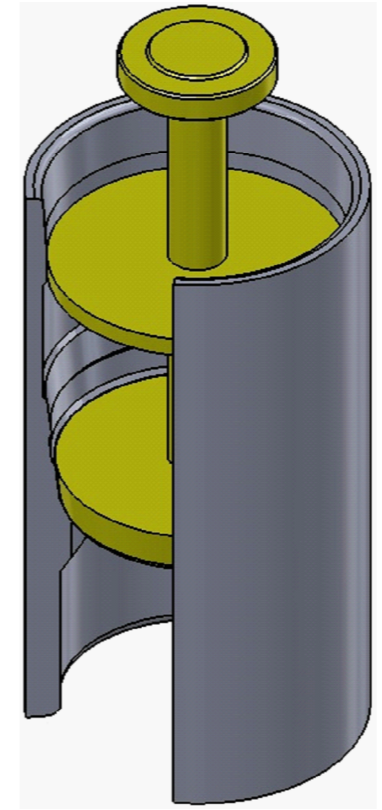
DETAIL E
SCALE 1:1



DETAIL C
SCALE 1:5



DETAIL D
SCALE 1:5



DOCUMENTS OF REFERENCE

- 1 - (*) INPUT DATA FOR FLEXIBLE JOINT/ TITANIUM STRESS JOINT DESIGN.
- 2 - (*) RISER SYSTEM REQUIREMENTS.
- 3 - I-ET-0000.00-0000-140-P56-001- CONICAL RECEPTACLE SPECIFICATION
- 4 - I-ET-0000.00-0000-290-P9U-004 - TITANIUM STRESS JOINT SPECIFICATION.
- 5 - I-DE-0000.00-0000-140-P9U-001 - CONICAL RECEPTACLE "TYPE A" - BASKET PROFILE DIMENSIONS
- 6 - I-DE-0000.00-0000-140-P9U-002 - CONICAL RECEPTACLE "TYPE B" - BASKET PROFILE DIMENSIONS
- 7 - I-DE-0000.00-0000-140-P9U-003 - CONICAL RECEPTACLE "TYPE C" - BASKET PROFILE DIMENSIONS
- 8 - I-DE-0000.00-0000-140-P9U-004 - CONICAL RECEPTACLE "TYPE A" REDUCED - BASKET PROFILE DIMENSIONS
- 9 - I-DE-0000.00-0000-140-P9U-005 - CONICAL RECEPTACLE "TYPE B" REDUCED - BASKET PROFILE DIMENSIONS
- 10 - I-DE-0000.00-0000-140-P9U-006 - CONICAL RECEPTACLE "TYPE C" REDUCED - BASKET PROFILE DIMENSIONS

(*) PROJECT REFERENCE NUMBER TO BE ISSUED DURING EPCI BID PHASE. DEFINITION OF THE RISER TOP JOINT (FLEXIBLE RISER ADAPTOR, FLEXIBLE JOINT OR STRESS JOINT), AND THE RECEPTACLE TYPES, SELECTED FOR A SPECIFIC PROJECT, TO BE INFORMED WITHIN PROJECT DOCUMENTATION.

GENERAL NOTES

- 1 - ALL MEASURES ARE IN MILLIMETERS, EXCEPT WHERE INDICATED.
- 2 - PROJECT SELECTED STANDARD RECEPTACLE TYPE(S), ACCORDING TO SPECIFIC DRAWING(S) IN REF. [5] TO REF. [10], TO BE INFORMED DURING BID PHASE.
- 3 - THIS IS THE ALLOWABLE GAP BETWEEN RECEPTACLE AND MOCK-UP, CONSIDERING THE FABRICATION TOLERANCES OF THESE TWO COMPONENTS (OVER FINISHED SURFACE, AFTER COATING APPLICATION). RECEPTACLE TOLERANCES AS PER REF. [5] TO REF. [10], STRESS JOINT, WHEN SUPPLIED WITHIN THE RISER CONTRACT, SHALL ALSO FOLLOW THESE SAME GAPS. SEE NOTE 4 FOR EXCLUSION.
- 4 - ONLY FOR THE MOCK-UP REPRESENTING FLEXIBLE JOINTS WHEN SUPPLIED WITHIN THE RISER CONTRACT: THE MOCK-UP'S BOTTOM PLATE GEOMETRY SHALL REPRESENT THAT OF THE ACTUAL FLEXIBLE JOINT (OR ITS CENTRALIZER PLATE) DESIGN.
- 5 - THE BOTTOM PROFILE OF THE MOCK UP SHALL MATCH THAT OF RISER TOP JOINT BASE, OR SHALL INTERFACE THE RECEPTACLE BOTTOM CONTACT SURFACE UP TO THE RADIUS "Rm". THE MOCK UP BOTTOM EDGE RADIUS "Rm" SHALL MATCH THE RISER JOINT'S, OR SHALL BE EQUAL TO OR GREATER THAN THE RECEPTACLE BOTTOM EDGE RADIUS "Rr" AS SHOWN IN "DETAIL E".
- 6 - THE REFERENCE BOTTOM EDGE FOR ELEVATION "A" IS THE "POINT C", I. E. THE RECEPTACLE CONTACT SURFACE'S LOWEST EDGE IN "DETAIL E". THE ACTUAL HEIGHT OF THE RISER TOP JOINT AND THE MOCK-UP SHALL TAKE INTO ACCOUNT THE LATERAL GAPS WITH RECEPTACLE AND ANY CENTRALIZER PIECE OR BUSHING ASSEMBLED ON THE RISER TOP JOINT BOTTOM PART.
- 7 - THE DIMENSION "X" IS AN ALTERNATIVE DIMENSION FOR FLANGE ELEVATION CONTROL DURING FPSO SPOOL ADJUSTMENT.
- 8 - BLIND FLANGE WITH THE SAME SPECIFICATION OF THE ELECTED RISER TOP JOINT, INCLUDING N2 TEST PORT IF SPECIFIED, AS PER REF. [1] OR REF. [2]. CONTACTING AND SEALING SURFACES SHALL NOT BE PAINTED OR BLASTED.

REV.	DESCRIPTION	DATE	EXEC.	CHECK	APPROV.
A	GENERAL REVISION	20/07/20	SFJC	TS8H	QM63
0	ORIGINAL	18/05/18	TS8H / EE93	U43H	QM63

THE INFORMATION CONTAINED IN THIS DOCUMENT IS PETROBRAS PROPERTY AND MAY NOT BE USED FOR PURPOSES OTHER THAN THOSE SPECIFICALLY INDICATED HEREIN.
FORM BELONGING TO THE NORM PETROBRAS N-381 REV. L.
Microstation V8i/SS3 EDITION - I-DE-0000.00-0000-140-P56-001=A.dgn
THE IMPRESSION OR REPRODUCTION OF THIS DOCUMENT TURN THE COPY NO CONTROLLED. TO VERIFY HIS UPDATING BEFORE USING HER.

		DP&T	
CLIENT:	STANDARD		
JOB:	STANDARDIZATION		
AREA:	DP&T-SUB		
TITLE:	RISER TOP JOINT MOCK-UP GEOMETRY REFERENCE		
DESIGN:	EDR	EXEC:	TS8H / EE93
SCALE:	1:20	CAT.:	DRAWING
DATE:	18/05/2018	COD.:	-
		MANAGER:	SUB/ES
		Nº:	I-DE-0000.00-0000-140-P56-001